

# ChemWell®-T

Fully Automated Biochemistry / Turbidimetric Analyzer

<b>Maximum throughput</b>	100 test per hour
<b>Min. and Max. volume</b>	2 µL - 388 µL
<b>Rack for reagents and samples</b>	<p>The Universal Rack includes five removable and user-selectable sectors for both reagent bottles and sample tubes, Assorted replaceable racks and custom designed rack segments are available for various bottle sizes</p> <p>Sector A holds four 30 ml reagent bottles Sector B holds four 15 ml reagent bottles Sector C holds four 5 ml vials and four 12 mm x 75mm tubes or 2 ml skirted conical tubes Sector D holds ten 12 mm x 75mm tubes Sector E holds eight 13 mm x 100 mm tubes or 12 mm x 75 mm tubes</p>
<b>Number of specimens</b>	Typically 20 including calibrators and controls but variable depending on rack sectors selected
<b>Reaction vessel</b>	8 cuvette strips, 5 tests per strip, total of 40 reactions on board
<b>Minimum reaction volume:</b>	240 µl
<b>Maximum reaction volume</b>	700 µl
<b>Instrument bottles</b>	0.25 L Priming Bottle
<b>Thermal control</b>	Cuvette Carrier 37° C or ambient room temperature Refrigerated Reagent Rack cools 8° to 12° C below ambient through Peltier thermoelectric modules
<b>Optical design</b>	Single channel photometer, NIST traceable absorbance calibration
<b>Filter wheel</b>	8 position filter wheel with 6 filters included 340, 405, 505, 545, 580, 630 nm
<b>Light Source</b>	Tungsten Halogen Lamp
<b>Linear range</b>	0.0 to 3.0A
<b>Photometric Accuracy</b>	± (1% of the reading +0.005 A from 0 to 1.0 A) ± (2% of the reading +0.005 A from 1.0 to 3.0 A)
<b>Calculation modes</b>	Single standard, factor, fixed time kinetics, kinetics by standard or factor, multicalibrator point-to-point, linear regressions, cubic spline, 4-parameter logistic and percent absorbance
<b>QC Options</b>	Store control data, print Levey-Jennings or QC range plots, calculate SDs
<b>Upgrade Format</b>	USB and Internet upgrades
<b>Operating Systems</b>	Microsoft Windows®
<b>Dimensions &amp; Weight</b>	53 cm Wide x 50 cm Deep x 40 cm High Approximate weight < 15 kg (37 lbs)
<b>Optional barcode scanner</b>	Barcode scanner available, allowing for rapid entry of sample data using code 39 barcodes



Awareness Technology, Inc. USA & International  
tel: +1 772 283 6540 sales@awaretech.com

Awareness Technology, Inc. Europe  
tel: +43 (0) 2236 892465 info@awaretech.eu

Awareness Technology, Inc. Asia & Africa  
tel: +971 (06) 557 80 58 info@awaretech.com



314620 H

sales@awaretech.com

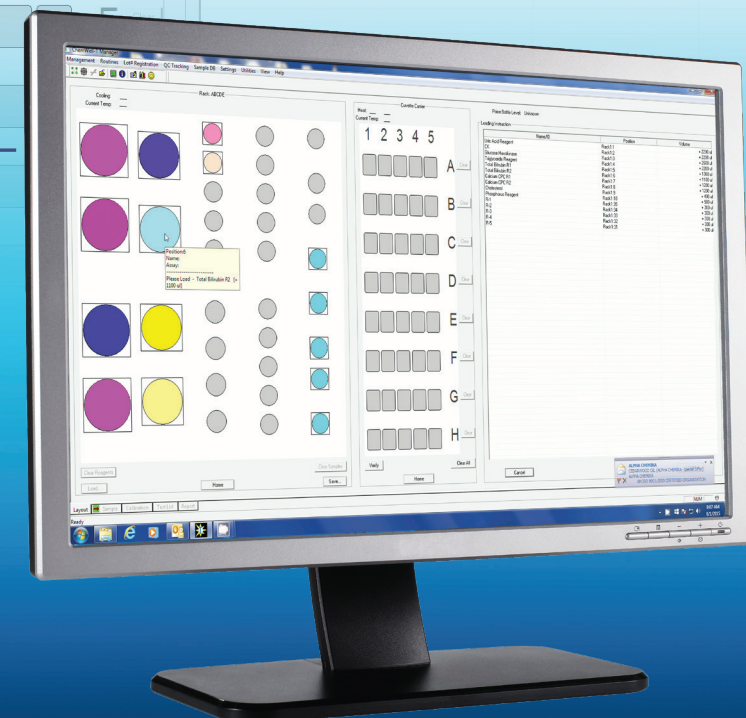
Deliver Results With Confidence

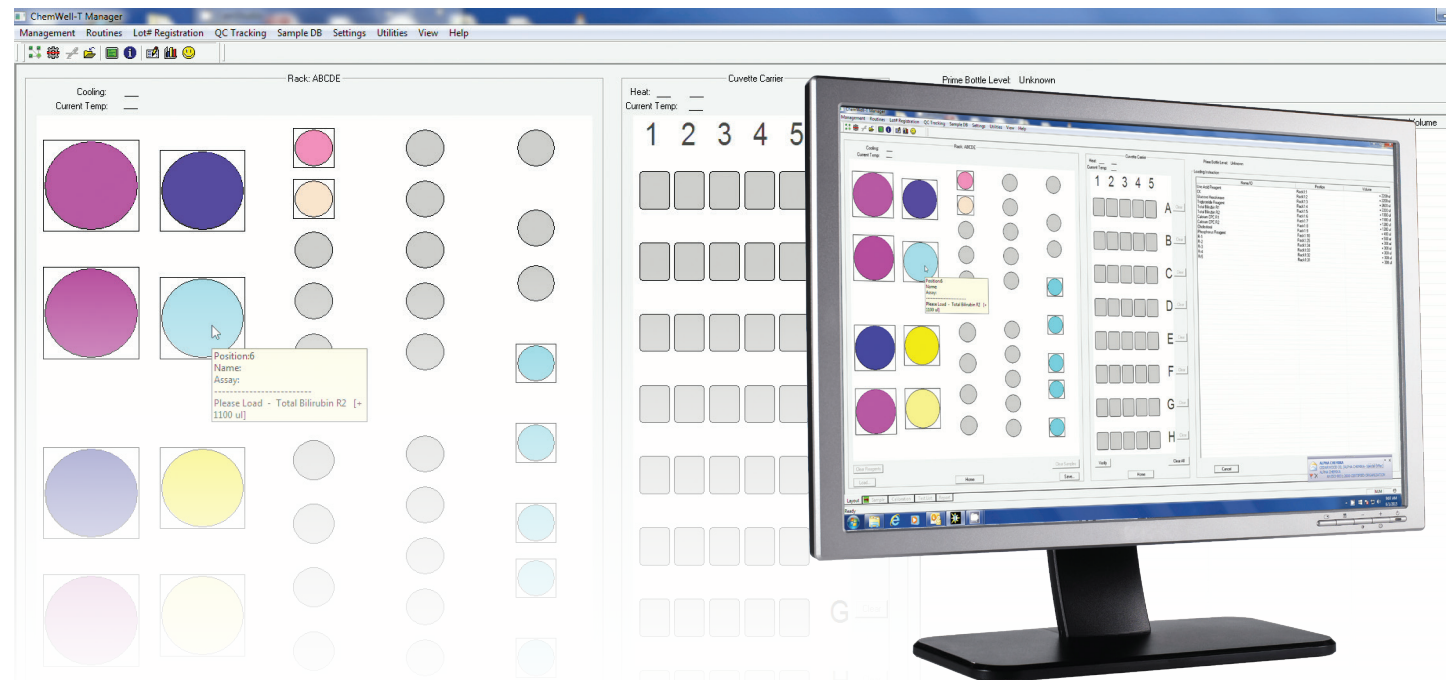
# ChemWell®-T

Fully Automated Biochemistry / Turbidimetric Analyzer



- Accurate results providing confidence to clinicians
- Compact and efficient chemistry analyzer
- Reliable performance





## The ChemWell®-T Advantage.

### Accurate and Precise

Above all other considerations when you are buying a biochemistry analyzer, you want results you can always trust. ChemWell-T's reliable optics and precision pipetting provide consistent dependable performance for your peace of mind.

### Flexible

ChemWell-T is a computer-dependent open system. Its comprehensive software allows you to enter parameters to build a test menu for a wide variety of commercially available biochemistry and turbidimetric kits. It is easy to edit, delete, and grow your list of applications.

### Robust

Materials and workmanship are specified and tested to assure product quality and longevity. In addition, to help assure quality performance, ChemWell-T has many instructional prompts, error messages, and features that track instrument QC and service needs.

### Easy

ChemWell-T's intuitive software visually mirrors what takes place on the analyzer. This facilitates programming assays, daily operation, and use of the many additional optional features that make ChemWell-T both powerful and convenient.



**ChemWell®-T** Automation, with all its advantages, optimized for lower throughput labs

### Capabilities Overview

ChemWell-T is designed to perform kinetic and endpoint assays with single or multiple reagents. It includes patient database software (or accepts a worklist via LIS). Once you enter an order and load the reagents and samples, the instrument processes all the tests and presents results for reporting, storing, or electronic export. A variety of assay calibration equations are available. Features include random access, continual loading, stat capability, on-board reagent cooling, ISE module ready, acceptance of controls anywhere any time, and automatic application of user entered QC criteria and test interpretations.

### Quality Control

- Registry of controls by lot number and expiration date
- Automatic Levey-Jennings tracking or QC plots based on acceptance ranges
- Many options for specific test QC such as limits for blank absorbance, minimum or maximum starting absorbance, and reflex testing for out-of-range kinetics

### Rack Configurations

ChemWell-T comes with a universal reagent and sample rack having 5 different sectors labeled A-E. Additional sectors can be ordered separately. Sectors A-D fit any location in the rack, making it possible to customize the rack for various workloads simply by rearranging the interchangeable sectors.

An optional second rack is available with a fixed configuration. This rack is insulated and includes a cover to help chill reagents left on board for longer periods of time. The instrument and insulated rack are available with and without a sample barcode scanning option.

### Reaction Cuvette and Carrier

ChemWell-T's 37° C incubated cuvette carrier holds 40 tests as eight disposable strips of 5 wells each. The carrier automatically aligns wells for pipetting, mixing, and reading.

### ChemWell® Management Software

ChemWell software has two components: Assay Editor - where test programs are created and edited, ChemWell Manager - where patient data is stored, work-lists are generated and all the operations are controlled.

### Five tabs walk the user through test set up

**SAMPLE** - select or enter sample Identifications and choose from the test menu which tests to run for each, select replicates if desired and Indicate Stat samples

**CALIBRATION** - use a stored curve or make a new one. For multi-point assays there are many options to choose from including curve editing ability

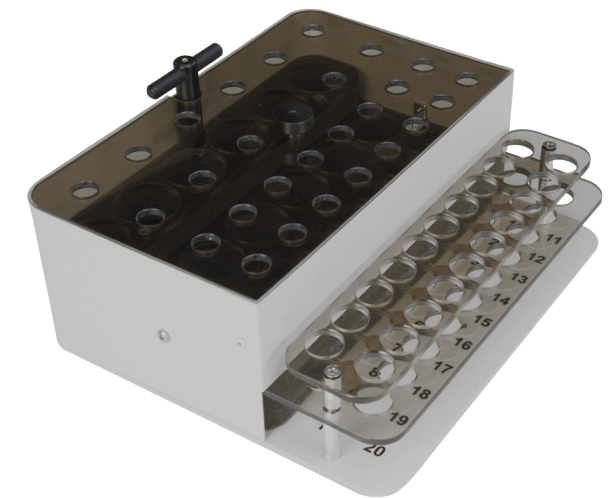
**LAYOUT** - verify proper placement of reagents and samples using colorful graphic references and familiar tools such as drag and drop

**TEST** - monitor work-in-progress and completed results

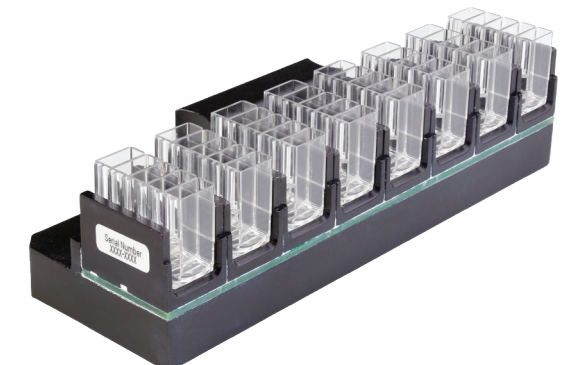
**REPORT** - create reports by assay, by patient, by date range and more



Universal rack  
Optional interchangeable segments available



Optional insulated reagent and sample rack  
(available with or without barcode)



37° C Heated 8x5  
Cuvette Carrier

